

ALEXURCO
ART DESIGNER



DECORATIVE ART PANELS
Composite Aluminum | Pure Aluminum





↓ APPLICATIONS





↑ SHOWERS





↑ SHOWERS FATURE WALLS

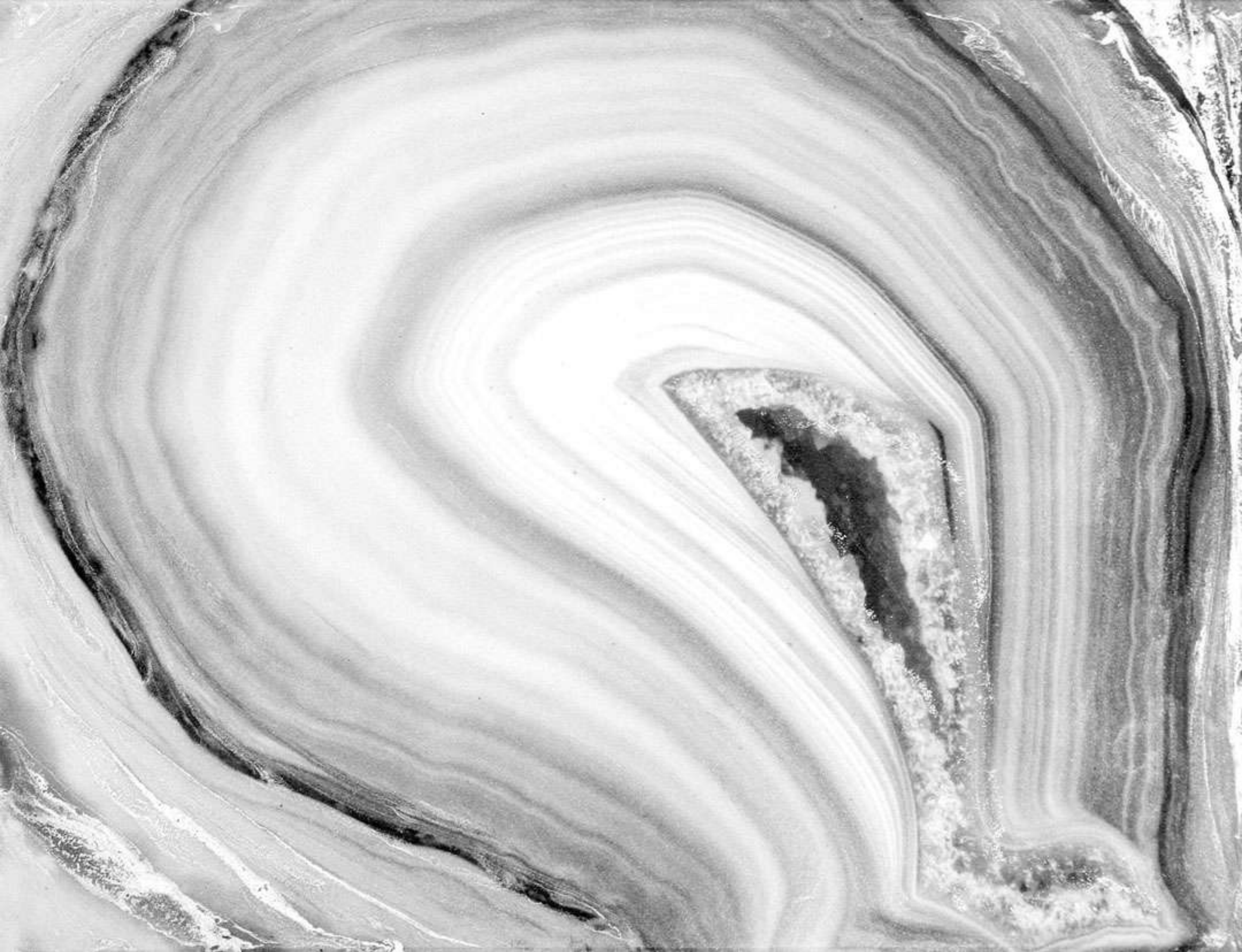








↑ BATH WALLS





↗ BATH WALLS





↑ SHOWERS

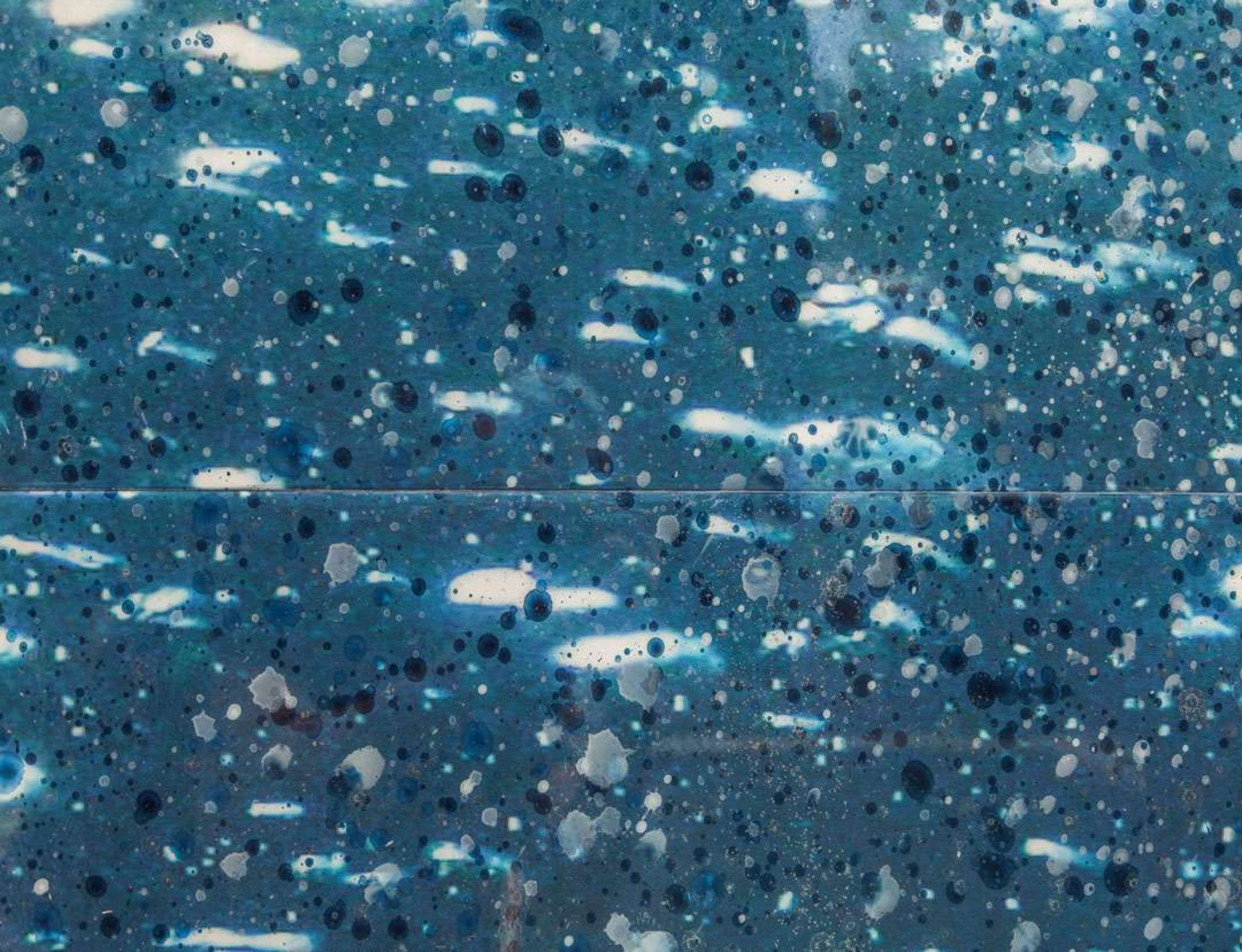




STEAM ROOMS













OUTDOOR WALLS



OXYGENE



OXYGENE





BACKSPLASH

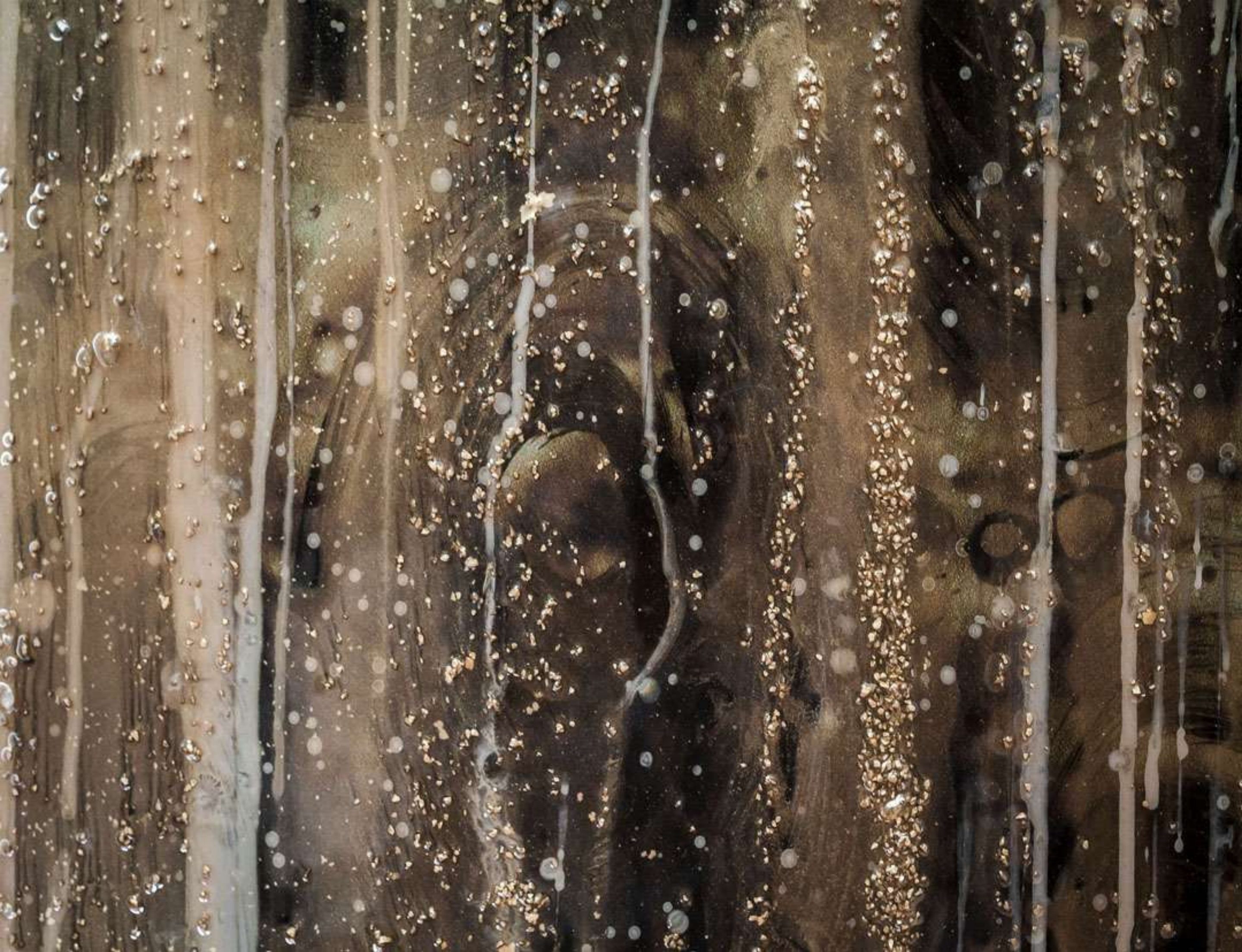








↑ LIVING ROOM WALLS





↑ LIVING ROOM WALLS





SLIDING DOORS







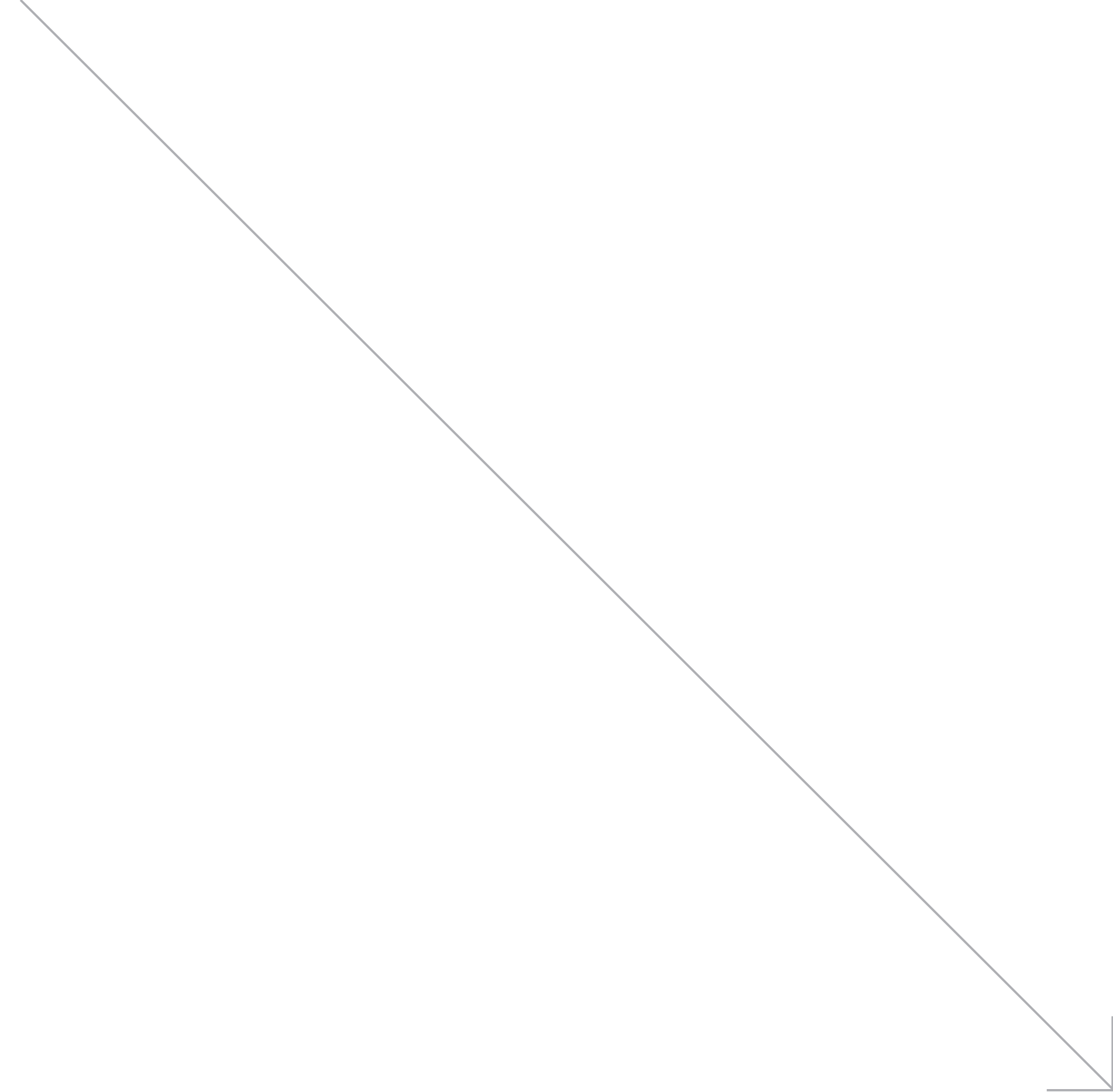










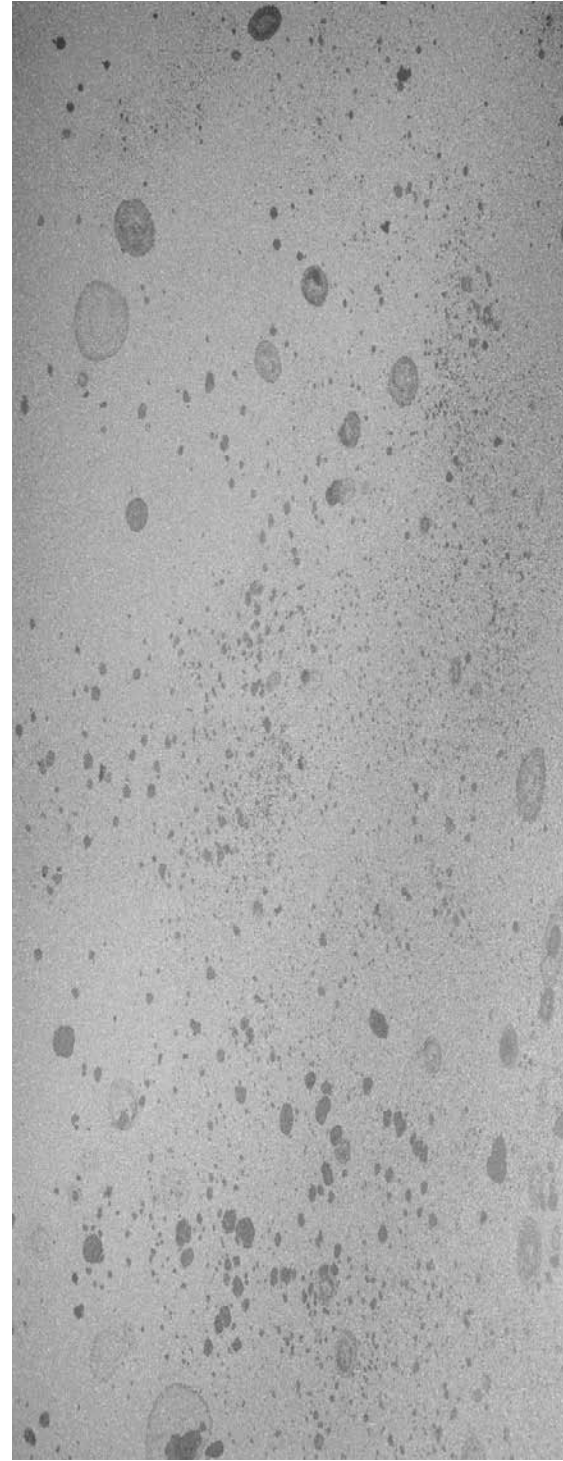


COLLECTIONS

ABSTRACT COLLECTION



GOLDEN STAR DUST



SILVER STAR DUST



GOLDEN GALAXY



SILVER GALAXY



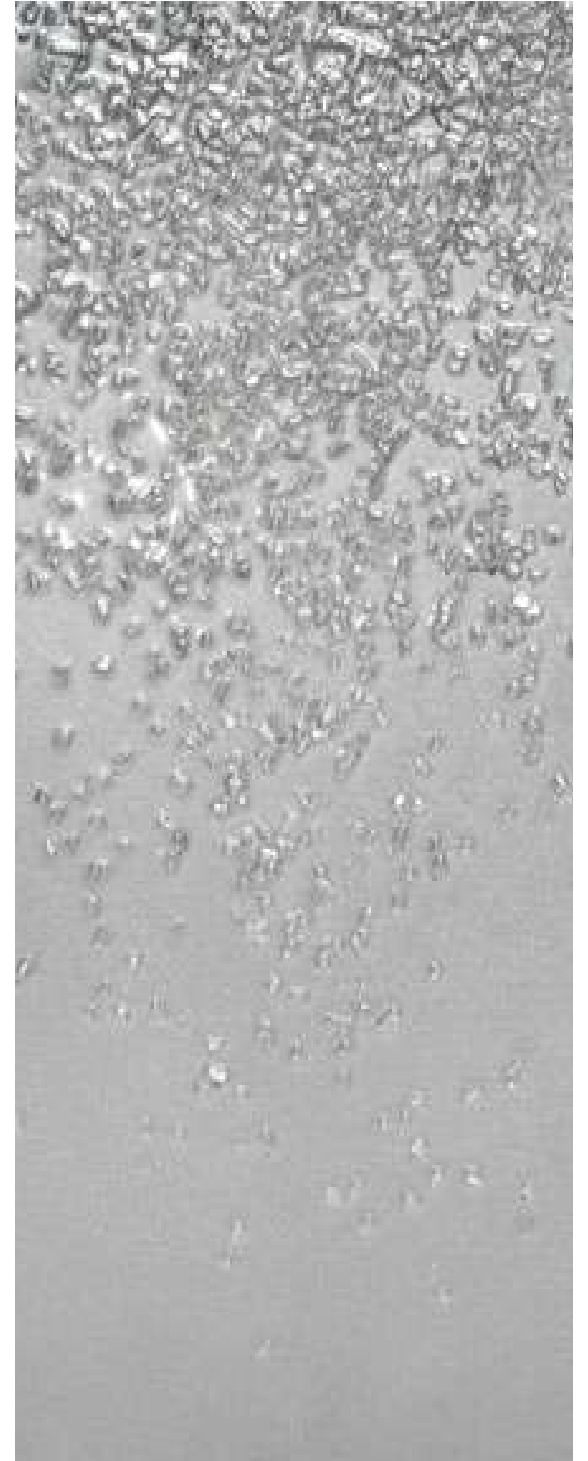
GOLDEN SCRATCHES



SILVER SCRATCHES



GOLDEN QUARTZ CASCADE



SILVER QUARTZ CASCADE



ACRYLIC LIGHT SILVER



ACRYLIC DARK SILVER



ACRYLIC PLATINUM



ACRYLIC GOLD



ACRYLIC COLORS



ACRYLIC COPPER



GOLDEN SCRAP



SILVER SCRAP

MINERALS COLLECTION



BLUE AGATE



WHITE AGATE



SILVER AGATE



BLACK AGATE



BROWN AGATE



GOLDEN AGATE



BEIGE AGATE



WHITE HEART



DARK BLOB



LIGHT BLOB



SILVER FRACTION



GREEN FRACTION



MALACHITE



MALACHITE IN BLACK



BLUE MONOLITH



PURPLE MONOLITH

ORGANIC COLLECTION



BAMBOO FOREST IN SILVER



BAMBOO FOREST IN GOLD



BAMBOO FOREST IN GREEN



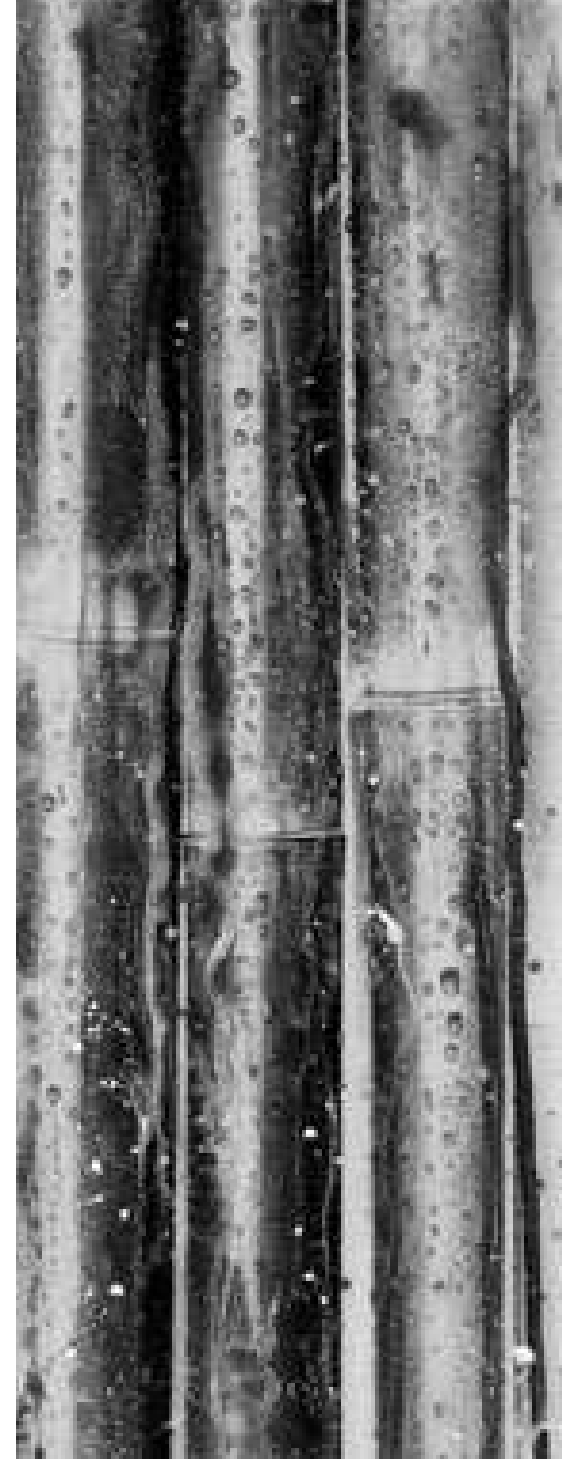
BAMBOO JUNGLE IN BROWN



BAMBOO JUNGLE IN GREEN



GREEN BAMBOO



SILVER BAMBOO



GOLDEN BAMBOO



DAY IN ASPEN



NIGHT IN ASPEN



DARK LIMBS



LIGHT LIMBS



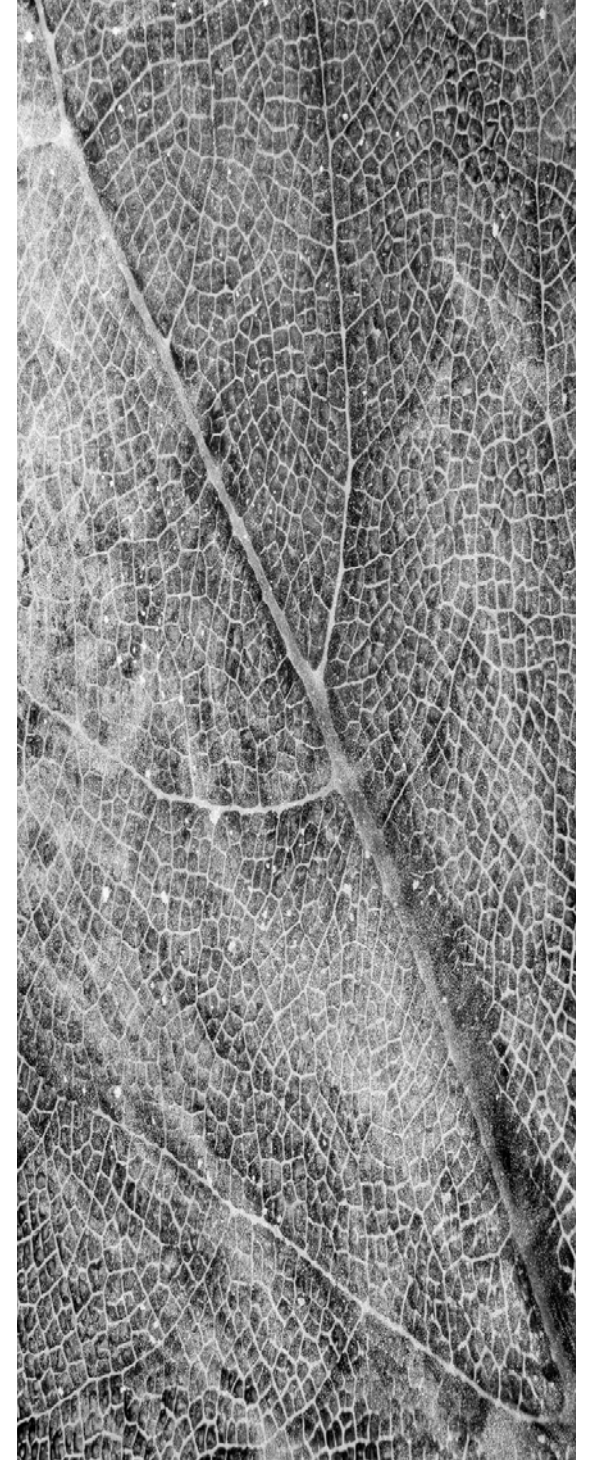
WHITE PALM



SILVER PALM



GOLDEN PALM



DNA

LIQUID DREAMS COLLECTION



BLACK SOULS



BLUE SOULS



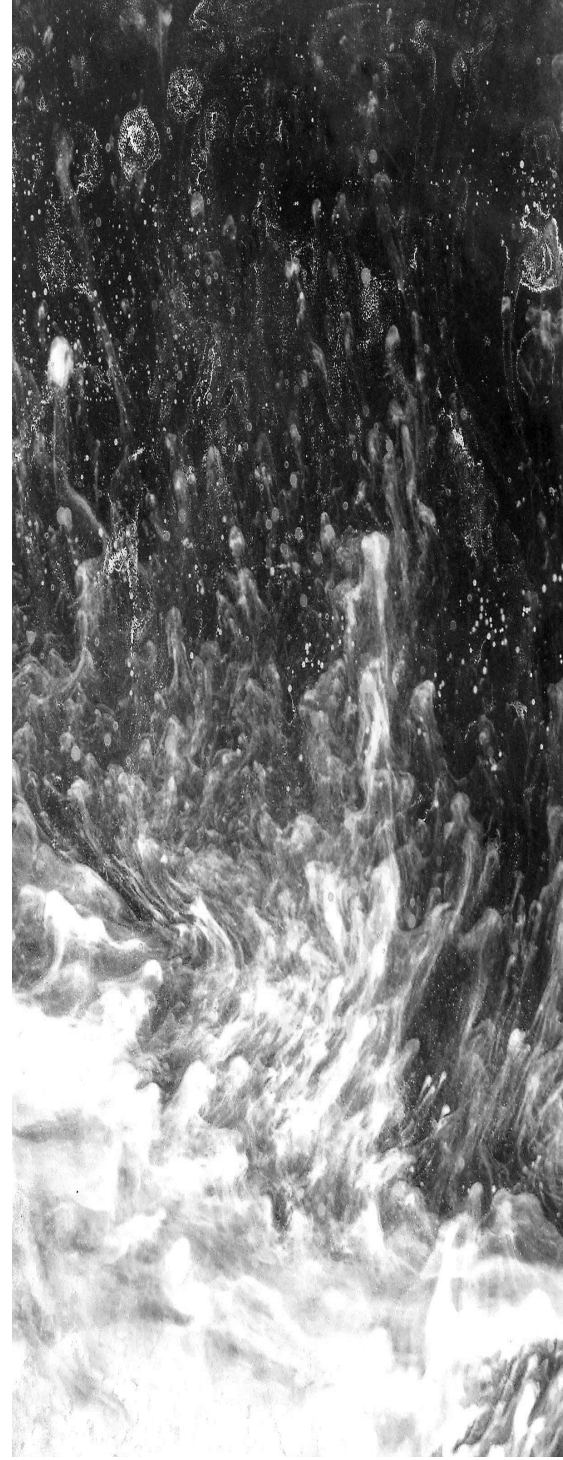
ORANGE SOULS



BROWN SOULS



PURPLE SPIRITS



WHITE SPIRITS



BLACK SPIRITS



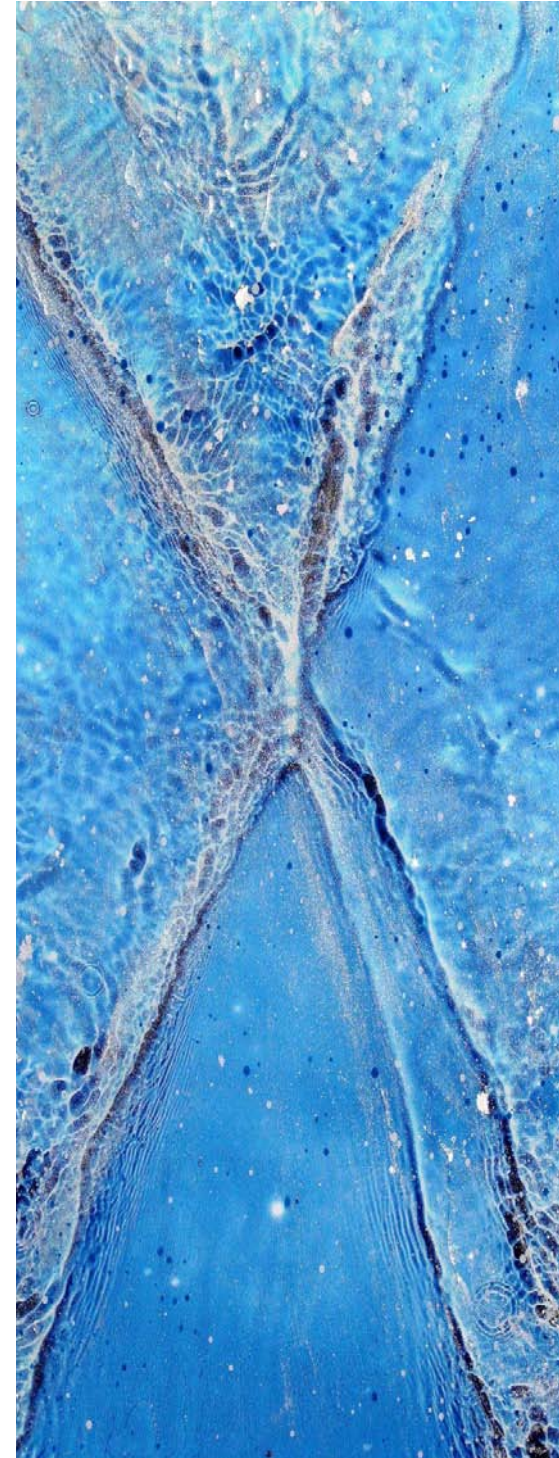
BLUE SPIRITS



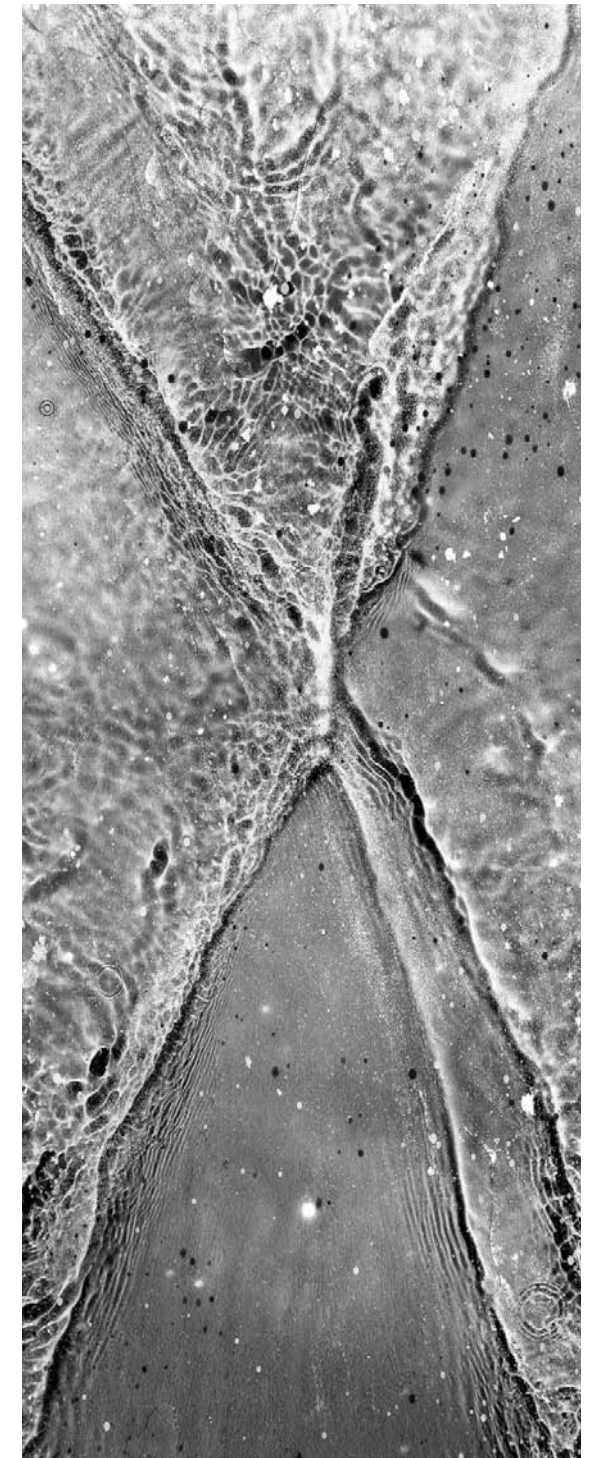
COHESION IN GOLD



COHESION IN SILVER



CROSSING IN BLUE



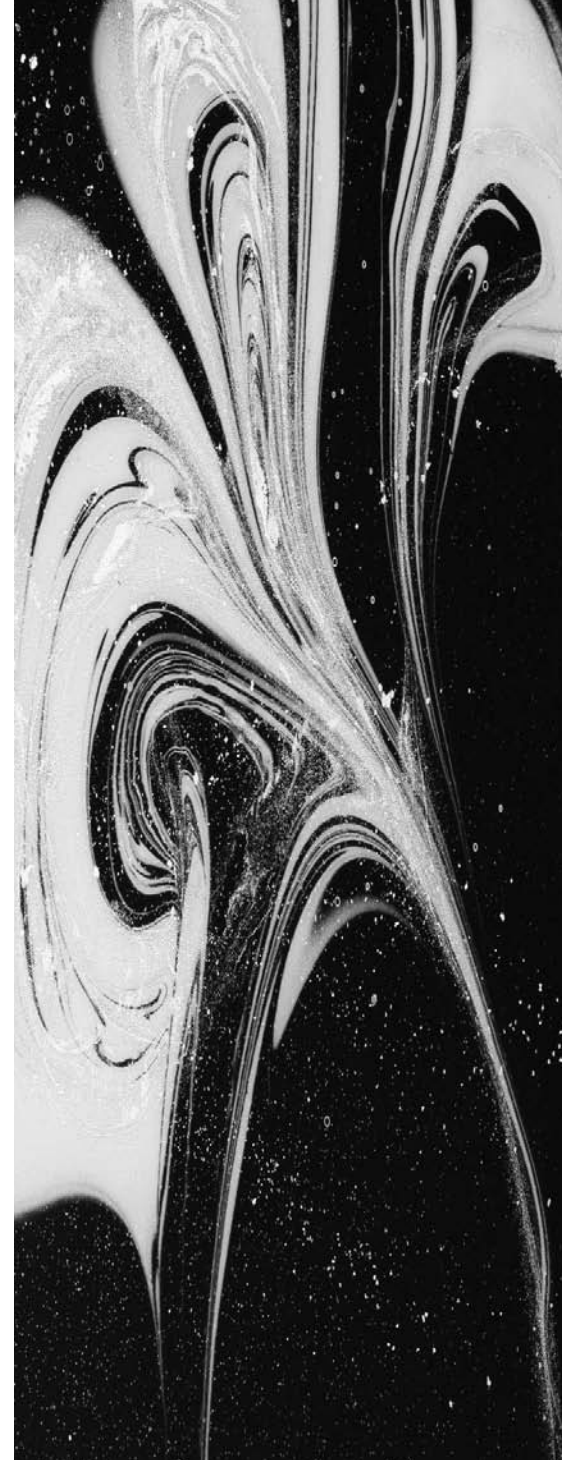
CROSSING IN SILVER



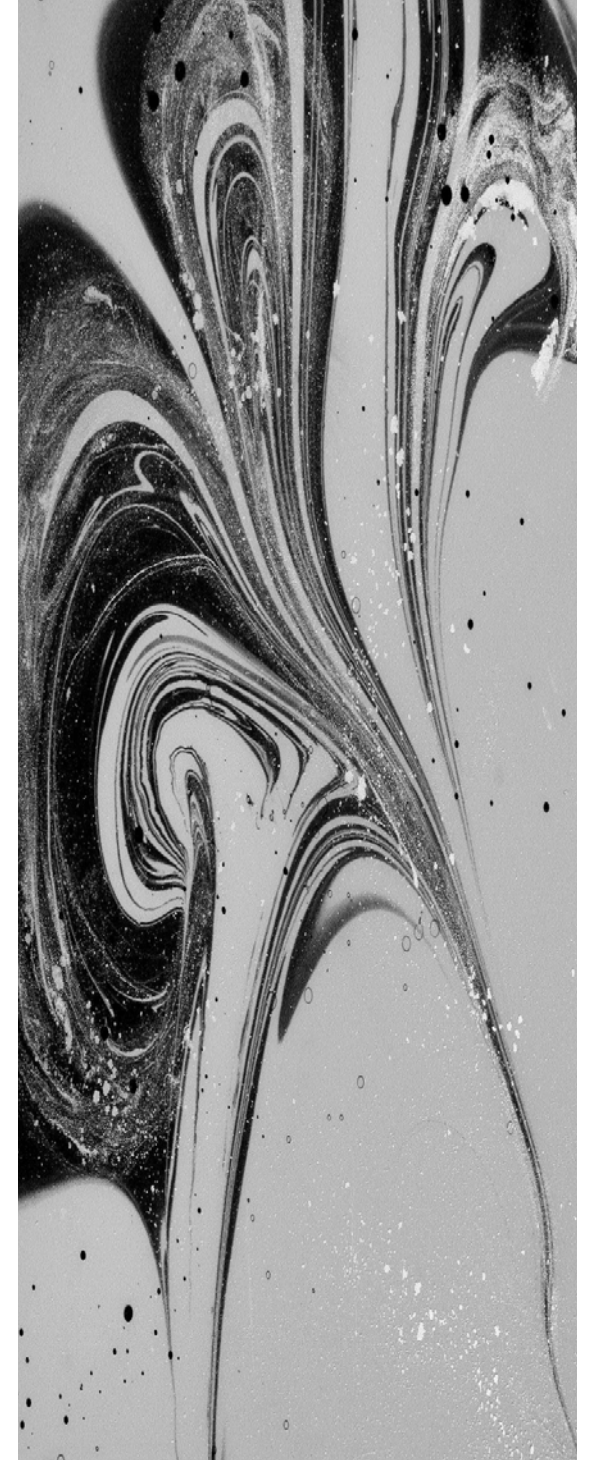
SOLUBLE GREEN



SOLUBLE SILVER



WHITE INK

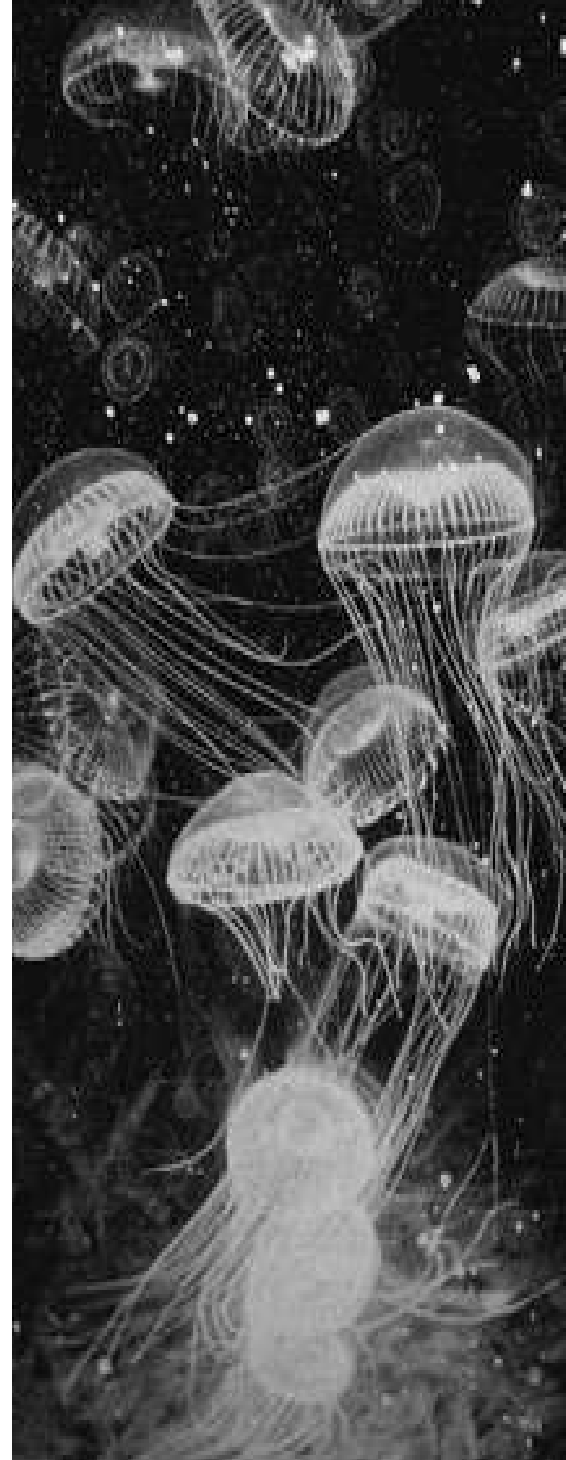


BLACK INK

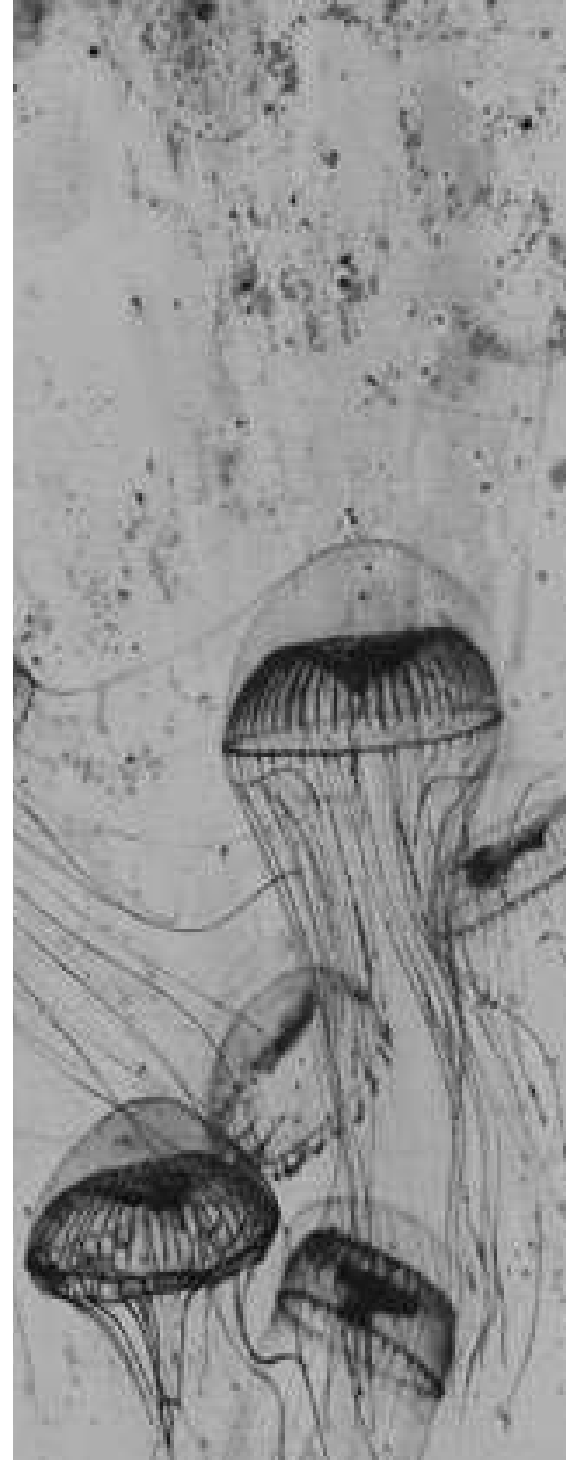
UNDERWATER COLLECTION



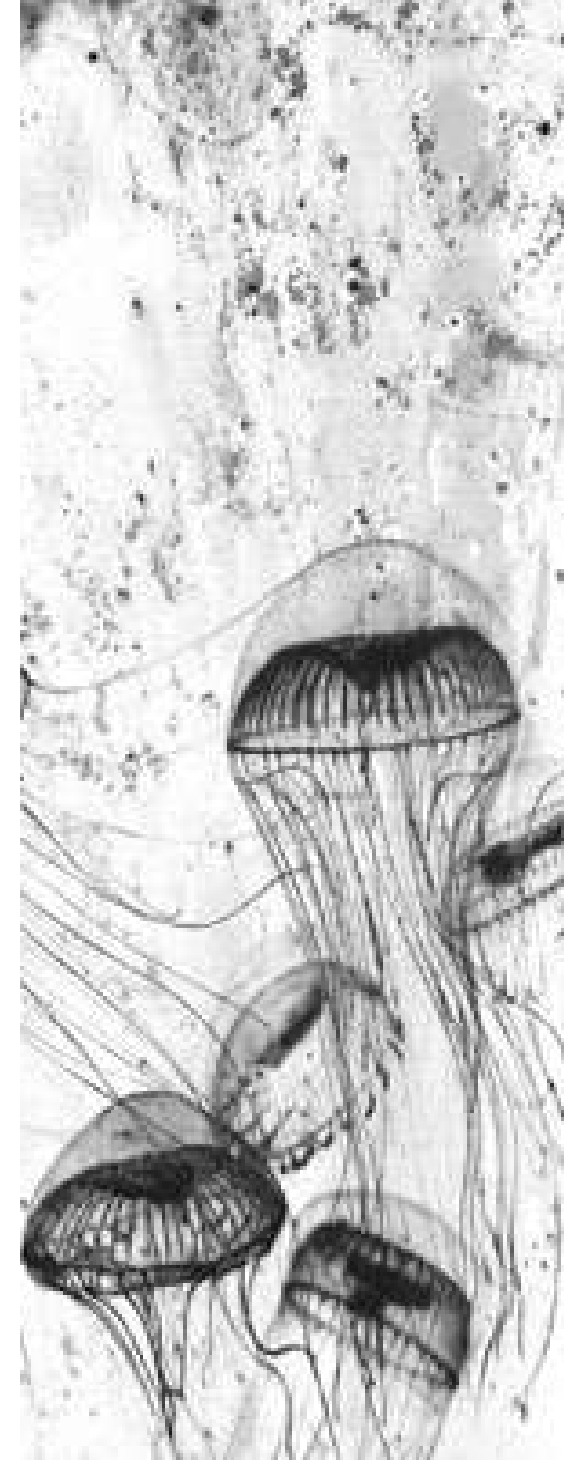
BLUE POISON



BLACK POISON



SILVER POISON



WHITE POISON



GOLDEN POISON



BROWN POISON



GREEN POISON



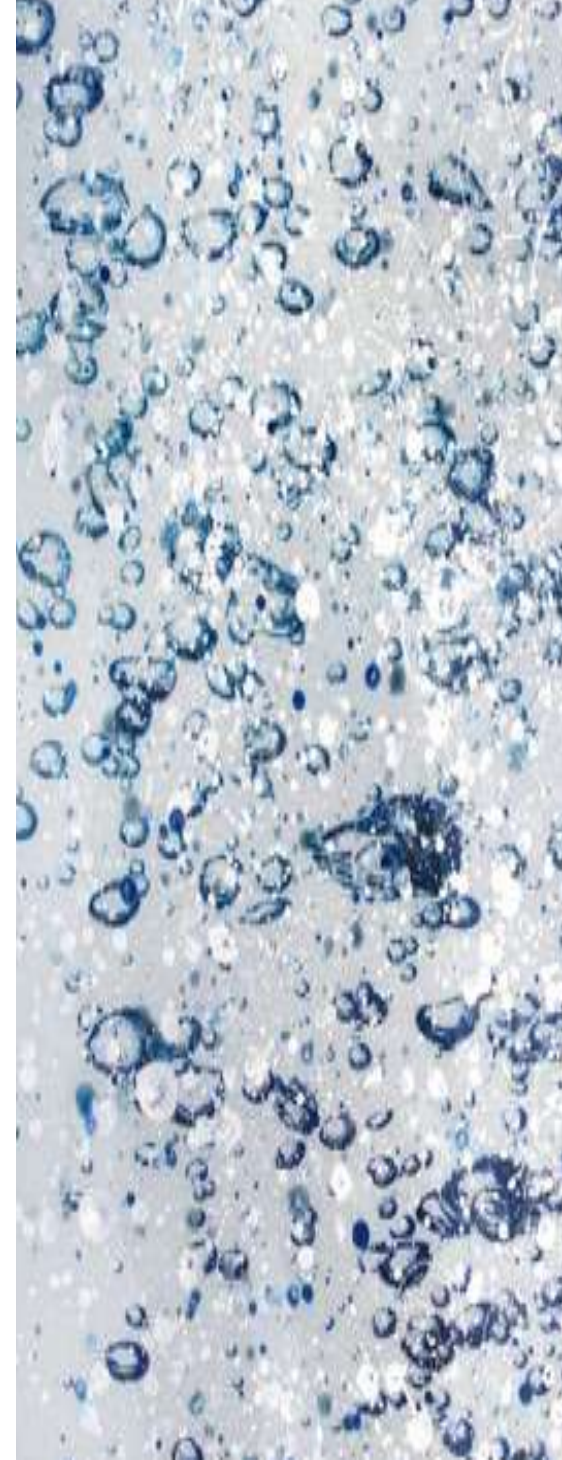
GREEN POISON DARK



DEEPER IN CREME



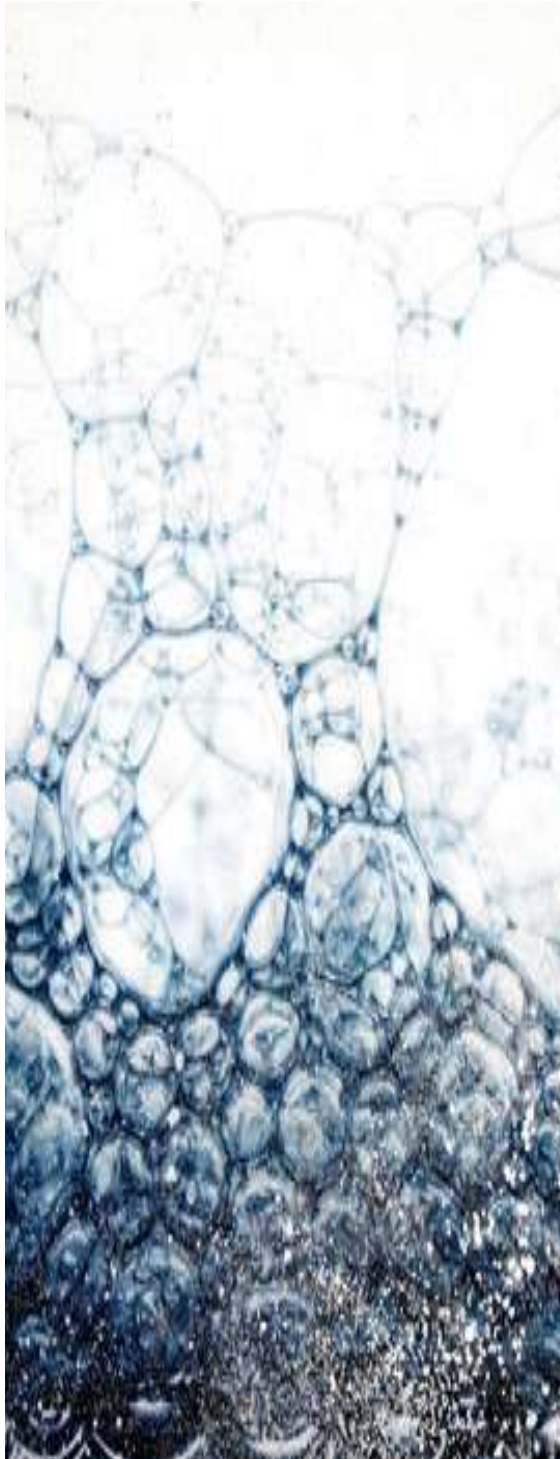
DEEPER IN BLUE



LIGHT BUBBLES



DARK BUBBLES



LIGHT SOAP



DARK SOAP



DROPS IN BLUE



DROPS IN SILVER

WOMAN TRIBUTE COLLECTION



SILVER KISS



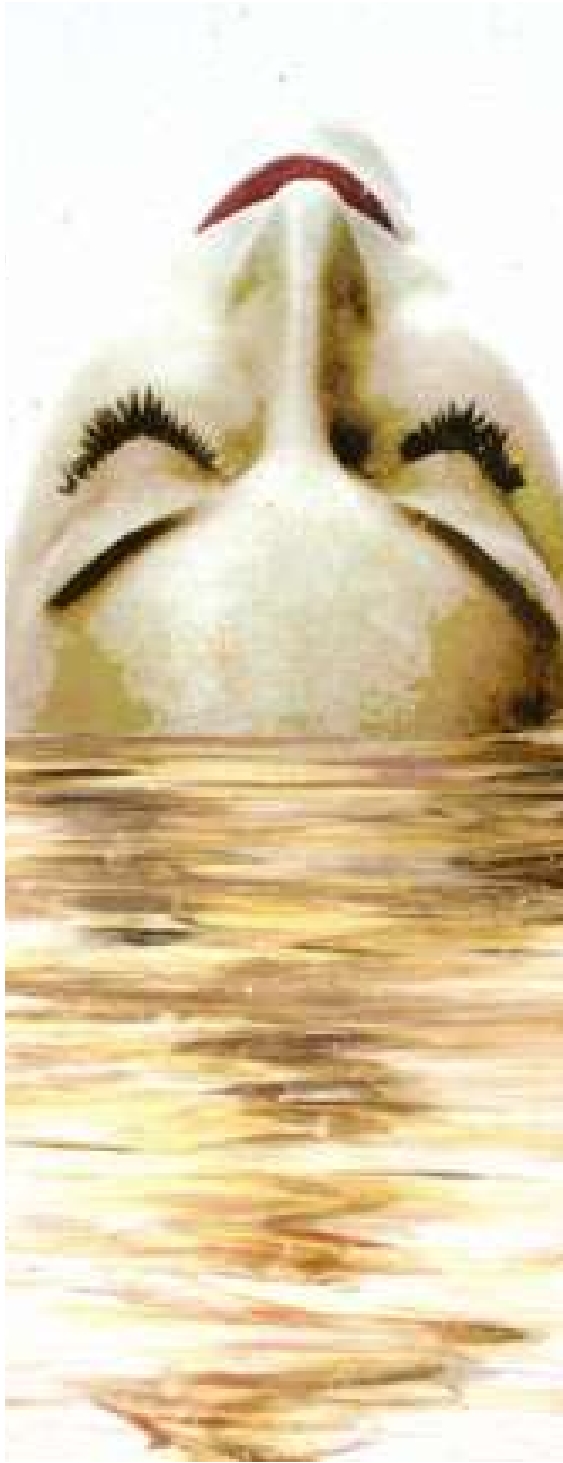
GOLDEN KISS



GUMMY IN SILVER



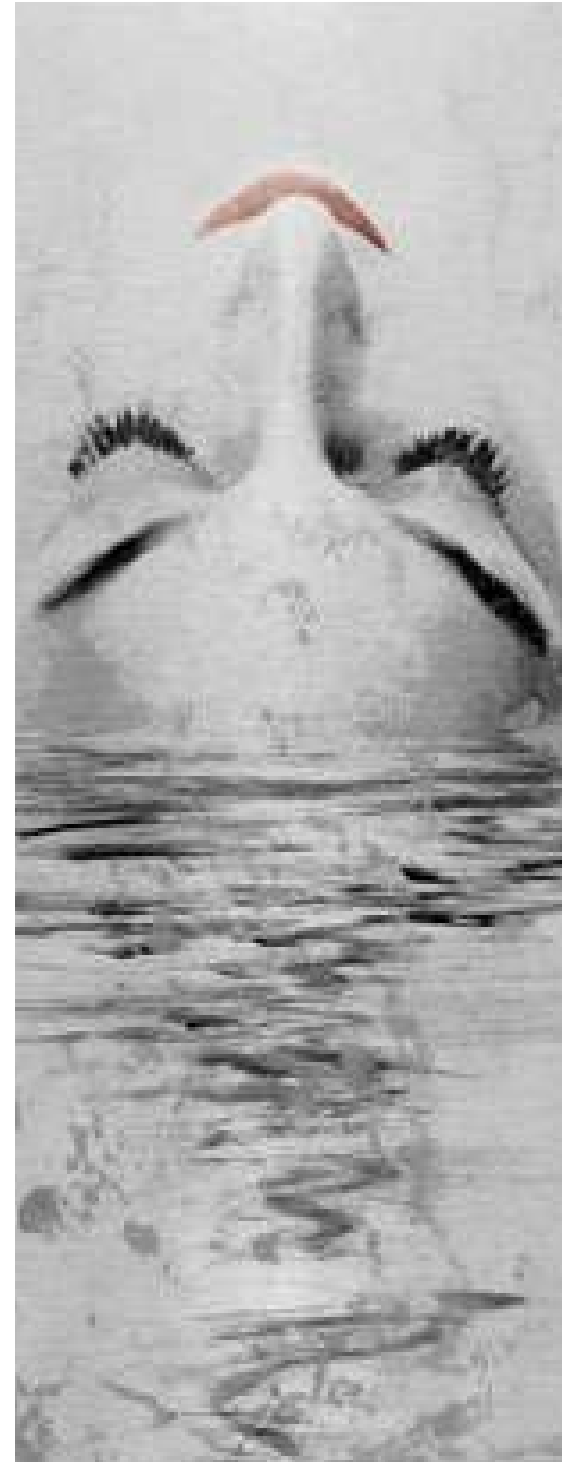
GUMMY IN PINK



WHITE THINK



GOLDEN THINK



SILVER THINK



FREE



GOLDEN REFLEX



SILVER REFLEX



FLOWER POWER



FLOWER POWER IN SILVER



OXYGEN IN BRONZE



OXYGEN IN BLACK

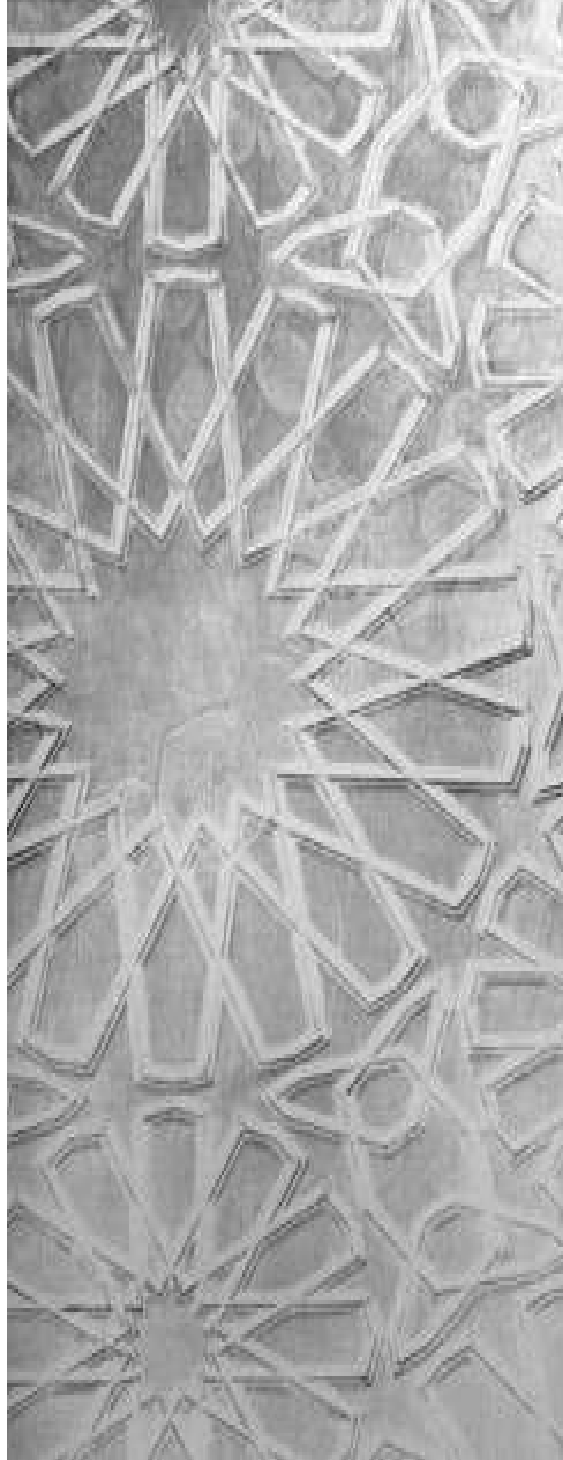


WILD SIREN IN BRONZE



WILD SIREN IN BLACK

└ MIDDLE EAST GLARE COLLECTION



ARABIC PATTERN IN SILVER



ARABIC PATTERN IN GOLD



ARABIC PATTERN IN CREME



ARABIC SCRIPT



IN MY HANDS



MY FALCONRY



THE WORLD IS YOURS IN GOLD



THE WORLD IS YOURS IN SILVER



THE CALM



DESERT



GOLDEN HORSE



SILVER HORSE



POLITE IN GOLD



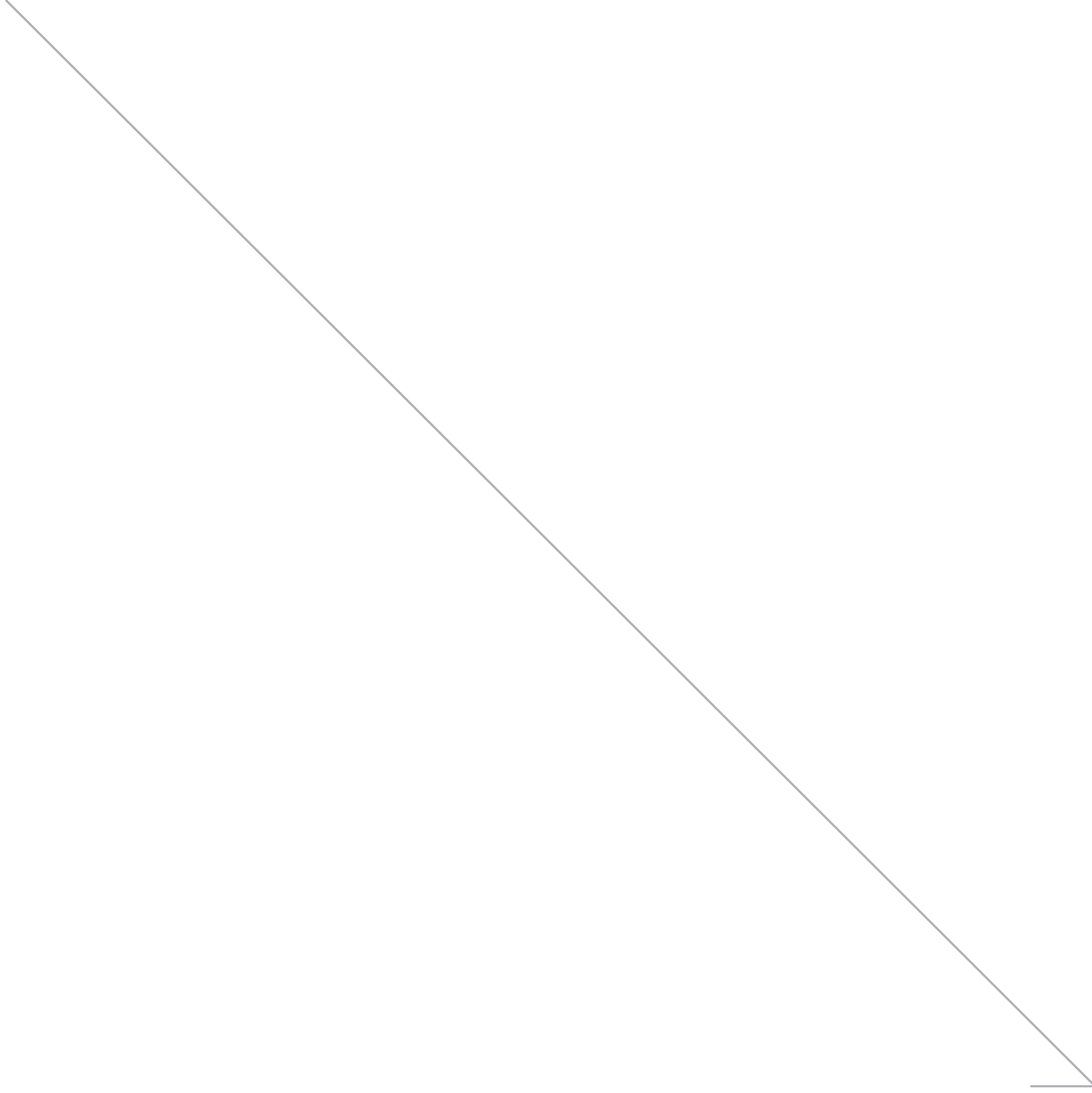
POLITE IN SILVER



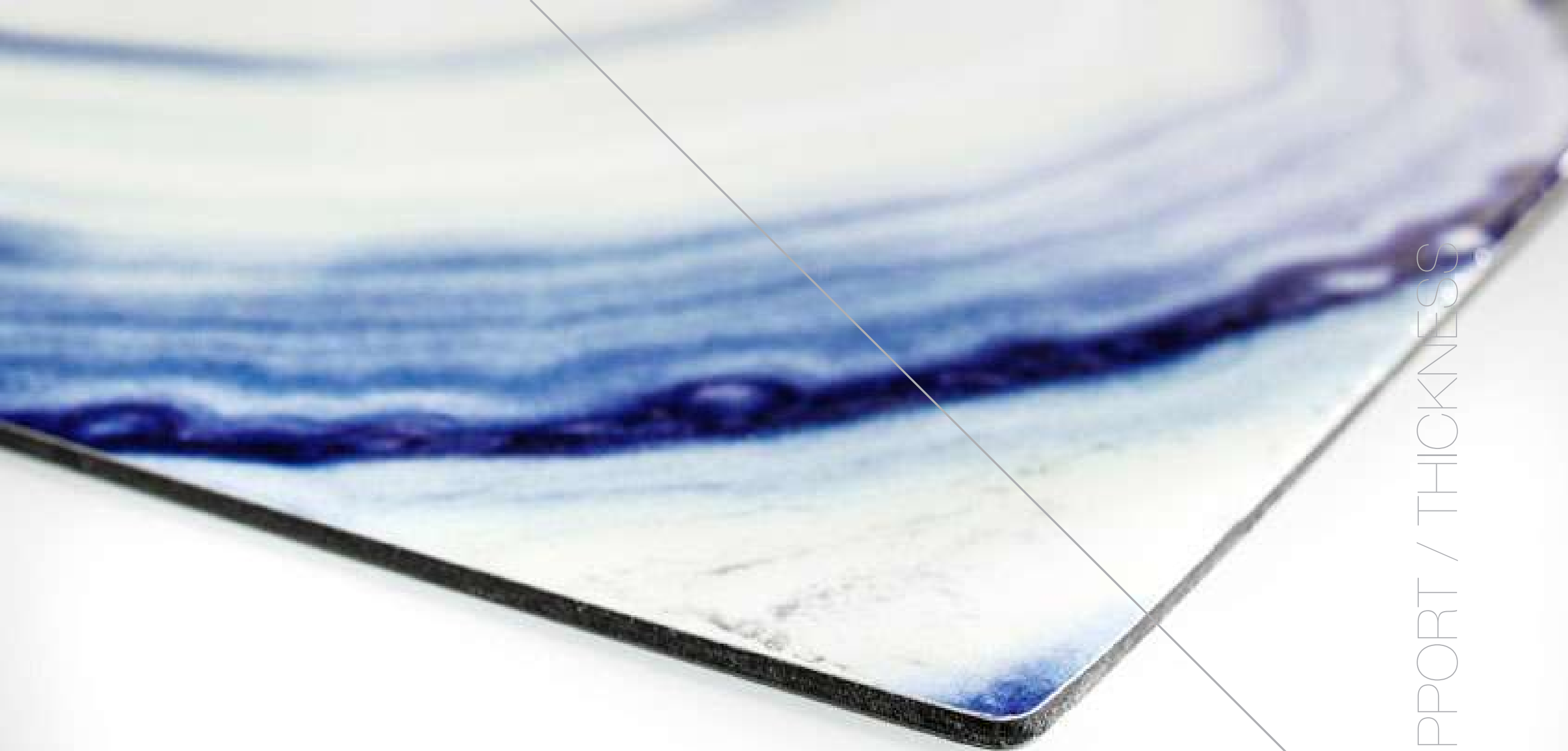
LADY IN BRONZE



LADY IN SILVER

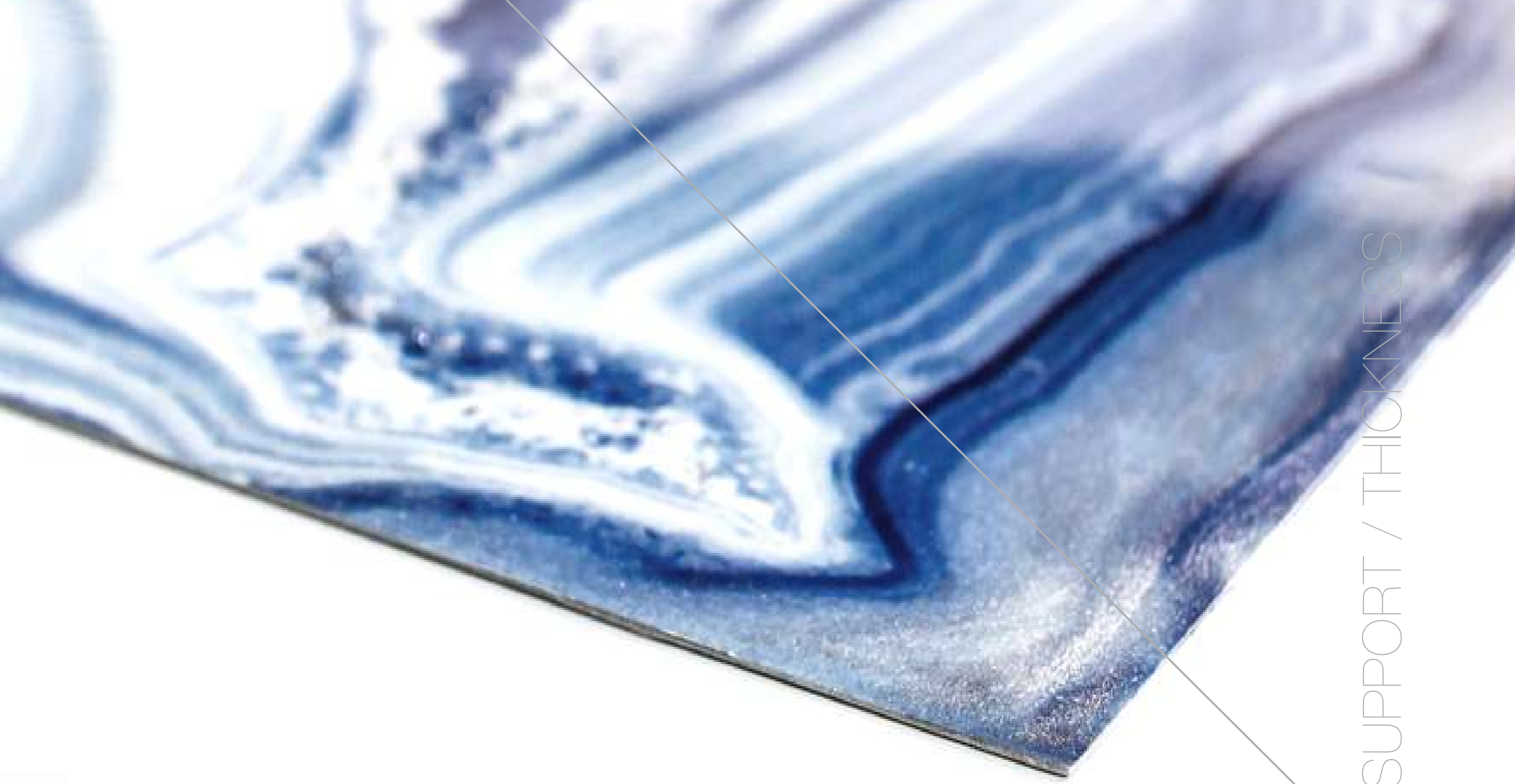


TECHNICAL INFO & DETAILS



SUPPORT / THICKNESS

COMPOSITE ALUMINUM
0.15" / 4 MM



SUPPORT / THICKNESS

PURE ALUMINUM
0.040" / 1 MM

A close-up photograph of dark wood grain, showing the texture and natural imperfections. A thin, light-colored diagonal line runs across the upper portion of the image. A prominent, light-colored, irregular stain is visible on the wood surface. The lighting creates a gradient from dark in the foreground to bright in the background.

FINISHES

FLAT

AVAILABLE IN GLOSSY OR MATTE



Z FINISHES

DRIPPING

AVAILABLE IN GLOSSY OR MATTE



FINISHES

TEXTURE

AVAILABLE IN GLOSSY OR MATTE

TECHNICAL DATA SHEET

FOREWORD:

The **DECORATIVE ART PANELS** created by **Alex Turco Art Designer** are artistic coverings suitable for any location.

Our panels are great for all environments in contact with water and moisture as well as outdoors and all atmospheric agents, even locations subject to extreme weather conditions. They are suitable for commercial as well as private spaces that could never host artworks and that have now become the focus of ambitious installations (wet areas, outdoor living, wall decorations, furniture and doors, counters and backsplash, elevators, ceilings, curved walls and columns).

In fact, this product maintains its characteristics of durability, impermeability and non-toxicity even under prolonged exposure to extreme weather conditions.

The art panel is manufactured by assembling three elements: **A)** pure aluminum or composite aluminum sheet + **B)** digital UV printing customized through graphics plus additional hand-made and artistic touches using acrylic paints and metal powders + **C)** a surface made of layers of transparent and waterproof bi-component epoxy resin.

SUPPORT:

Our artworks are made from a smart and versatile material produced by **ALCOA**, from which we use two different types:

- **COMPOSITE ALUMINUM** which is made of two sheets of aluminum sandwiching a solid core of extruded thermoplastic material formed in a continuous process using no glues or adhesives between dissimilar materials.

- **PURE ALUMINUM** which is a flat sheet composed only of simple aluminum.

** For a complete technical overview please visit reynobond.com or reynolux.com*

These supports are very light and workable materials: they are easy to mill, cut, bend, fold and silk-screen print.

The greatest value of these materials lies in its ability to accept digital printing directly on its surface with excellent results and has the following characteristics: it is suitable for use in buildings both outdoors and indoors; it is UV ray resistant; it is perfectly flat; it is incredibly light; it has good mechanical characteristics it is completely soundproof (it does not resonate); it is easy to work with and it does not require any anti-static treatment.

The technical data of the supports are as follows:

COMPOSITE ALUMINUM:

Thickness:

0.15" / 4 mm

Panel maximum size available:

white base:

5' x 10' in the USA / 2000x4000 mm in UE-Asia

golden or silver base:

4' x 8' in the USA / 1500x3000 mm in UE-Asia

Weight:

0.100 lb/ft² / 5 kg/m²

Thermal resistance:

from -122ŽF to +176ŽF / from -50ŽC to +80ŽC

PURE ALUMINUM:

Thickness:

0.040" / 1 mm

Panel maximum size available:

white base:

4' x 10' in the USA / 1250x2500 mm in UE-Asia

golden or silver base:

4' x 8' in the USA / 1500x3000 mm in UE-Asia

Weight:

0.50 lb/ft² / 2,5 kg/m²

Thermal resistance:

from -122ŽF to +176ŽF / from -50ŽC to +80ŽC

PRINTING AND COLORS USED:

The images chosen by the art designer are worked on using graphic design software tools and digital photo retouching effects.

The artistic result represents the basis on which the designer operates, first using acrylic colors through casting, brush and sponge, and then using metallic powders diluted in alcohol.

The uniqueness and value of these artworks arise specifically from the artistic/hand-made work performed on each individual plate.

The digital picture is transferred on the aluminum through an ink jet printer that uses liquid dUV curable ink: The colors dry quickly thanks to the exposure to ultraviolet rays, which solidify and secure them to the support. The printing technique is based on a CMYK (four colors) process. The range of colors is controlled through dedicated software and it features the full color spectrum.

The characteristics of the dUV curable color printing process are the following: the LED lamps' UV ray frequency spectrum is non-harmful to health; the inks have very low emission of volatile organic components (VOCs); there are no toxic substances and color saturation is optimal.

FINISHING LAYER AND PROTECTION:

Plate protection and full waterproofing of the digital prints are performed manually by spreading a bi-component self-leveling **EPOXY RESIN** that is solvent-free and ready to use by simply mixing the base.

Component A: solid epoxy resin of bisphenol A and epichlorohydrin, liquid novolac epoxy of bisphenol F and epichlorohydrin;

Component B: catalyst (cycloaliphatic polyamines) which provides effective protection and high resistance to aggressive chemicals, acids, bases, oils, and grease.

The client can choose between 2 types of finishing in order to have either a **GLOSSY** or a **MATTE** effect; both will protect the panel over time as well as consolidate the art layer underneath.

The main characteristics of this finishing are as follows: surface that does not yellow over time, that is waterproof, solvent-free and therefore non-toxic. Moreover, other than the **FLAT** finish it is possible to have a **DRIPPING** or **TEXTURED** finish where natural elements (sands, crystals and minerals) are used during the process.

INSTALLATION:

The surface where the artwork will be installed must be flat and free of bumps, lumps, and relief. It is necessary to make sure that the surfaces to be glued are clean, dry and degreased. For gluing wood, wood moisture must not exceed 15%.

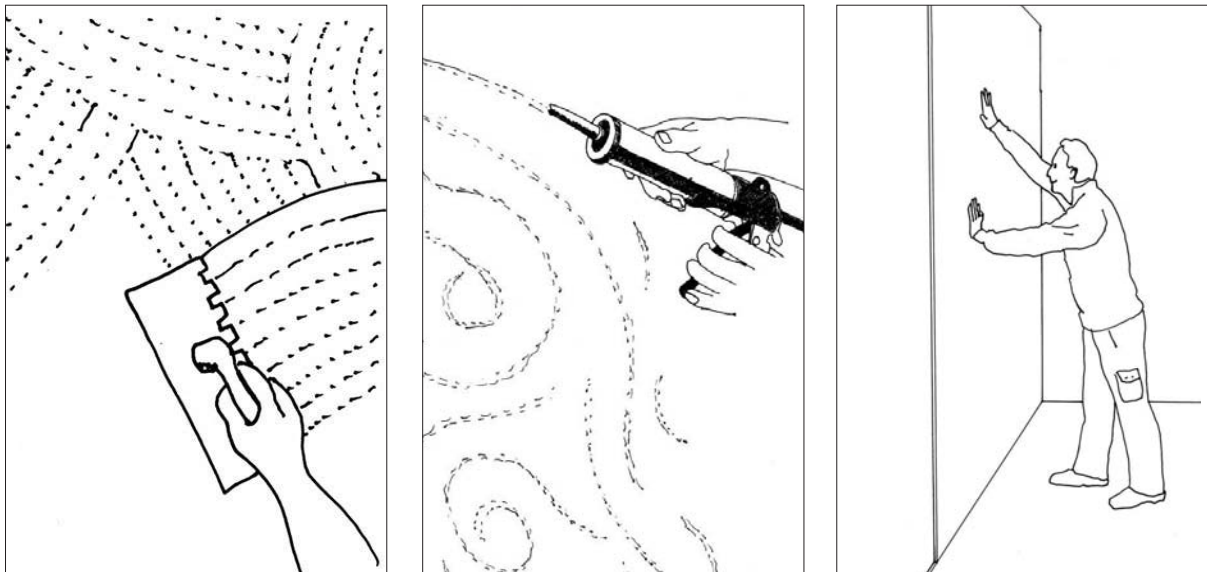
In the case of gluing on metals, the oxidized surface layers must be removed (through sanding and then washing using a degreasing solvent such as acetone).

It is necessary to sand the fiberglass surfaces or very smooth surfaces with sandpaper. When used in moist locations with walls in plasterboard, gypsum plasters, cement plasters or marine plywood, we recommend first to waterproof the surface with an easy to find product, such as the **WPS MAPEGUM** by **MAPEI** or similar (*the data sheet can be downloaded from this link: www.mapei.com/public/COM/products/2014_mapegum%20wps_gb.pdf*).

To glue the panels is necessary the use of skilled workers, such as tile, marble and mosaic professional installers. We suggest the use of single component polyurethane adhesive products that are both moisture and thermal stress resistant.

As a guideline, the use of a quality products suitable for this purpose and easily available in all countries are: **Liquid Nails - Bostik - Trade Fix - Simson - Den Braven** or **KERALASTIC T** flexible setting compound manufactured by **MAPEI** (in the US market the product name is **PLANICRETE W**) or any equivalent (*the data sheet can be downloaded from this link: www.mapei.com/public/COM/products/122_keralastic_gb.pdf*).

The adhesive must be spread evenly on the wall using a toothed spatula (see the picture). The artwork can be applied locking it by applying pressure with the palm of the hand (see the picture).



DRILLING AND ADJUSTING ON SITE:

The panels can be easily cut at the job site following these instructions:
- small and simple cuts can be done using a **regular cutter**; you will only need to trace a line then follow it with the blade a few times.

We normally advise the use of a professional **metal ruler** and **blue tape** to prevent scratching the resin on the panel.

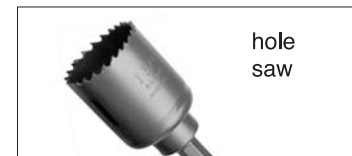
Given the fact that the panels are made of a flexible material it will be easy to cut them as the pieces will separate after cutting by simply bending the 2 parts.

- bigger cuts can be done using professional machinery such as the **cnc router**, **panel saw wall system** or even better using a **table saw** with a specific **fine tooth laminate grade blade** to prevent chipping of the resin.

We always advise to make all cuts on the back of the panels to prevent resin from chipping or peeling.



- for round cuts such as the ones needed to install shower fixtures or any other hole that needs to be made in order to install lights or pipes, we advise the use of a **hole saw** for metals or a **regular drill** that will allow you to make several small holes so that the resin will not chip or break.



MAINTENANCE AND CLEANING:

The surface of the panel does not require special maintenance.

The resin treatment makes the surface resistant to stress, wear and tear; however, for regular cleaning we recommend cleaning products that are free from abrasives substances in order to prevent surface scratching.

There are many standard detergents on the market that are suitable for this use like **Viakal**, **Jif**, **Viss** or **Cif Soft Cream** or **Bathroom mousse**; also any glass product is ideal for daily cleaning. We do not recommend the use of bleach and thinners. To obtain a beautiful finish, we recommend using a microfiber cloth with spray cleaner **Menzerna "Top Inspection"**, **Meguiars "Final Touch"**.

After a couple of months, we recommend you to treat/process the panel with a wax or polish. When polishing, we recommend you use two polishing compounds with a circular polisher in the following order: **WHITE Meguiars Ultra-Cut Compound 105** or **GRAY 3M "Perfect It" Machine Polish 06064**.

HANDMADE WITH LOVE!

A L E X T U R C O
A R T D E S I G N E R

DISTRIBUTE WORLDWIDE BY AT WAVE LLC

FOR FURTHER INFORMATION PLEASE WRITE TO
INFO@ALEXTURCO.COM

OFFICIAL WEB SITE
WWW.ALEXTURCO.COM

FB
ALEX TURCO - ART DESIGNER

TWITTER
@ALEXTURCOART